



Delta Section

Volume 32 No. 4

NEWSLETTER



December 2015

CHRISTMAS NEW ORLEANS STYLE!

There's no place like New Orleans for the holidays during Christmas New Orleans Style, a celebration of uniquely New Orleans holiday activities taking place throughout December. Experience the magic of the season in a city steeped in traditions of the past, but with the food, music and good times of today. Here are a few you don't want to miss...



Christmas in the Crevasse

December 11, 2015 – January 1, 2016

Recurrence: Weekly on Sunday, Friday, Saturday

Location: Corner of Louisiana and Shadowbrook

Address: 152 Shadowbrook Ln, LaPlace, LA 70068

Time: 6:00 pm - 10:00 pm

Christmas in the Crevasse is now open featuring hayrides on 5 acres of farm land with over 70 lighted Christmas frames on display in LaPlace. The hayrides last approximately half an hour and depart every 15 minutes. Get a "Taste of St. John" with hot chocolate, coffee or apple juice and snacks for a small fee. Proceeds benefit Greater New Orleans Therapeutic Riding Center. Bathroom facilities are available. No reservations needed. Tour groups and corporate events may make reservations during the week.

Celebration in the Oaks

December 11, 2015 – January 3, 2016

Recurrence: Recurring daily

Location: New Orleans Botanical Garden

Address: Victory Avenue, New Orleans, LA 70124

Time: Friday and Saturday 6:00 pm - 11:00 pm;

Sunday - Thursday 6:00 pm - 10:00 pm

City Park's annual holiday lighting exhibit and festival returns with one of the most beautiful holiday light exhibits in the country.



Miracle on Fulton Street

December 11 – 27, 2015

Recurrence: Recurring daily

Location: Fulton Street

Time: Open Daily, Dec. 4-Dec. 27. Live music and holiday marketplace from 5-10 p.m. Fridays and Saturdays during the first three weekends

Miracle on Fulton Street, an annual holiday tradition in the heart of downtown New Orleans, will once again transform the Fulton Street pedestrian corridor into a winter wonderland.

Connecting the Industry's Experts



- Geoscience
- Land, Legal, & Accounting
- IT, HR, & Technical Support
- Project Controls & Management
- Operations Engineers
- Reservoir Engineers
- Production Engineers
- Drilling Engineers
- Construction Engineers
- Health, Safety, & Environmental

Executive and Staff Level Positions

www.collarini.com

Collarini Energy Staffing Inc.

Houston
832-251-0553

Where Talent Meets Opportunity!

(985) 727-2060
www.onesourcepros.comEngineering • Geoscience • Technical Support
DIRECT HIRE | CONTRACT

Slidell, Louisiana

1-800-966-2788

www.eeusa.com

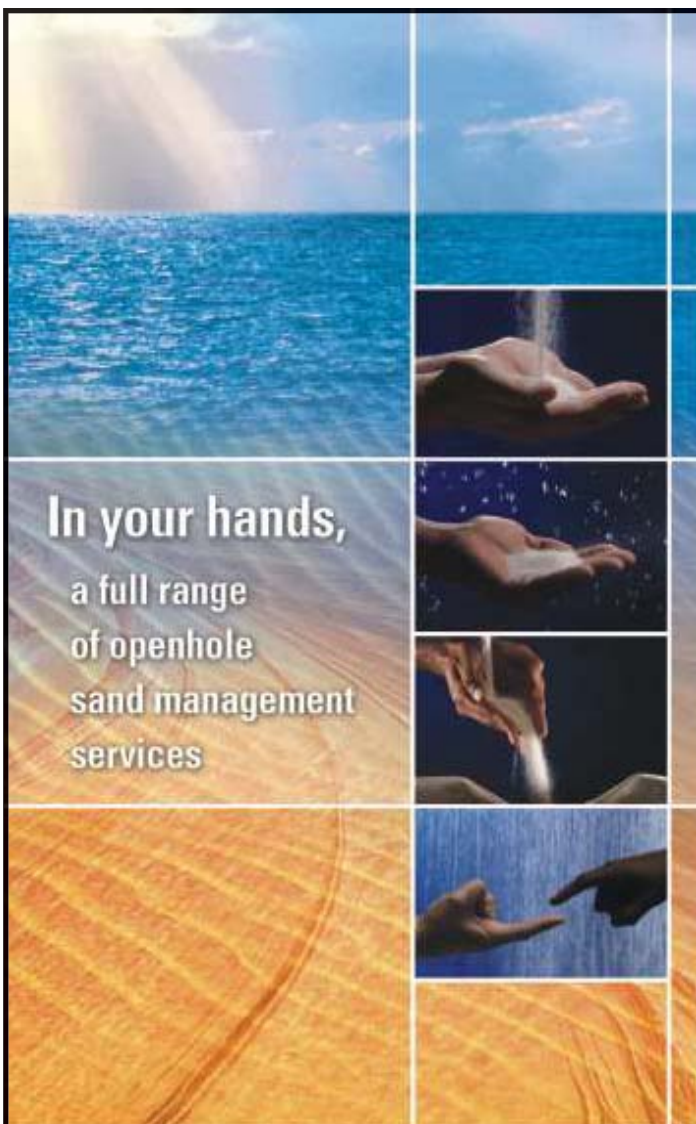
Effluent Toxicity Testing
Produced Water Toxicity
Drilling Fluids Toxicity
Sediment Toxicity Testing—SBM & SBF
275-Day Biodegradation Test

DMR/Data Management
Oil & Grease Analysis
Sample Pick & Delivery Services
Water Well & Septic Tank Testing
OECD 28-Day Biodegradation Test

Established 1987

In This Issue:

Christmas New Orleans Style Events.....	1
Officers & Board of Directors.....	3
From the Chair.....	4
December Membership Report	5
Continuing Education - January 2016 Course.....	6
Continuing Education - March 2016 Course.....	7
SPE-YP 2015 Events	8
Nov. 2015 General Meeting Luncheon.....	10
NOGS Proposal Announcement.....	11

In your hands,
a full range
of openhole
sand management
services

Transcend

Reslink* screens and inflow control devices
AquaPac* integrated water-packing technologies
OptiPac* Alternate Path† gravel-pack system
IntelliPac* measurements in real time

Transcend technology.
A higher level of completion success.

www.slb.com/transcend

Schlumberger

*Mark of Schlumberger © 2008 Schlumberger. 08-SMS-043

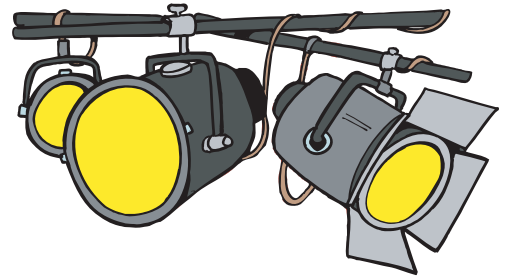
†Mark of ExxonMobil; technology licensed exclusively to Schlumberger

2015-2016 SPE Delta Section Officers and Board of Directors

Role	Name	Company	Phone	Email
Section Chairperson	Angie Gobert	BSEE	504.736.2876	Angie.Gobert@bsee.gov
Section Past-Chairperson	Tony Richards	Century Exploration	504.836.7328	Tony.Richards@centuryx.com
Program Chairperson 1st vice chair	Renny Ottolina	Schlumberger	504.425.7381	rgrunichev@slb.com
Membership Chairperson 2nd vice chair	Daniel Durey	Shell E&P	504.425.7762	Daniel.Durey@shell.com
Secretary	Jiabei Wu / Caitlyn Papso	Schlumberger/Shell	504.425.4321	JWu5@slb.com / Caitlin.Papso@shell.com
Treasurer	Victor Vaca	Chevron	985.773.6457	Victor.Vaca@chevron.com
Young Professional Chairperson	Lauren Woitha	Chevron	985.773.6679	Lauren.Fogarty@chevron.com
Young Professional Co- Chairperson	Colin Hosli	Shell	(504) 239-2302	C.Hosli@shell.com
Sec Dir/Student Chapter Liaison (LSU\NSU)	Rivers Fike	Shell	504 214 5329	Rivers.Fike@shell.com
Northshore Coordinator	Lauren Woitha	Chevron	985.773.6679	Lauren.Fogarty@chevron.com
Focus Chairperson	Sean Vaskov	Shell	504.425 3179	Sean.Vaskov@shell.com
Meeting Coordinator\Registration	Jaime Villatoro	Shell	281.380.0518	Jaime.Villatoro@shell.com
Internet Chairperson	Alvis Wilson	Shell	504.425.0953	Alvis.Wilson@shell.com
Social Chairperson	Reagan Butcher	WS Nelson	504.593.5605	Reagan.Butcher@wsnelson.com
Continuing Education Chairperson	Henry Shurlds	Onesource Prof Search	985.727.2060	henry@onesourcepros.com
Scholarship /Career Guidance	Sue Park	Chevron	985.773.7542	suepark@chevron.com
Newsletter Contents and Advertising	Vincent Liaw	Baker Hughes	985.590.6449	Vincent.Liaw@bakerhughes.com
Newsletter Contents and Advertising	Nick Judice	WMD Squared	337.735.1054	njudice@wmd2.net
HSE	Michael Waguespack	Nelson	504.593.5693	Michael.Waguespack@wsnelson.com
Section Director 2014/2016	Jenny Weekley	Shell	504.728.6449	jennifer.weekley@shell.com
Section Director 2014/2016	Jan Catalano	ORX	504.581.1806	jan@orx.com
Section Director 2014/2016	Tony Richards	Century Exploration	504.836.7328	tony.richards@centuryx.com
Section Director 2013/2015	Matt Wandstrat	LLOG Exploration	985.801.4300	mattw@llog.com
Section Director 2013/2015	Phil Moses	Consultant	504.616.6511	pamoses1@uno.edu
Section Director 2015/2017	Walter Navoy	Schlumberger	504.592.5402	navoy1@slb.com
Section Director 2013/2015	Jon Wood	LLOG Exploration	985.801.4300	jon.wood@llog.com
ONE VOICE Chairperson	Jan Catalano	ORX	504.581.1806	jan@orx.com
ONE VOICE Asst	Charlie Mayne	W&T Offshore	504.210.8172	cmayne@wt offshore.com
Deepwater Chairperson (Aug 2015)	Bob Meltz	Chevron	985.773.6843	RMeltz@chevron.com
Deepwater Treasurer	Tony Richards	Century Exploration	504 836 7328	tony.richards@centuryx.com
Deepwater Treasurer Asst	Pat Ketcham	Consultant	504.340.8100	KETCHPD@COX.NET
Sr. Advisor	Allen Porter	Jacobs Engineering	504.846.5505	allen.porter@jacobs.com
Golf Tournament Co-Chairperson	Matt Wandstrat	LLOG Exploration	985.801.4300	mattw@llog.com
Golf Tournament Co-Chairperson	Jerry Simms	LLOG Exploration	985.801.4300	jerrys@llog.com
Golf Tournament Treasurer	Jenny Weekley	Shell	504.728.6449	jennifer.weekley@shell.com
Active Past Chairs:	Jan Catalano	ORX	504.581.1806	jan@orx.com
	Matt Wandstrat	LLOG Exploration	985.801.4300	mattw@llog.com
	Tony Richards	Century Exploration	504.836.7328	tony.richards@centuryx.com
Other's Interested in Helping	Charlie Mayne	W&T Offshore	504.210.8172	cmayne@wt offshore.com
	Jiabei W	Schlumberger	504.425.4321	JWu5@slb.com



From the Chair...



Happy Holidays,

I am hoping that this newsletter finds all of you in good spirits and good health despite the trying and challenging circumstances we may be facing. 'Tis the season to be jolly' as the seasonal carol encourages!

I attended the Joint Energy Industry Society along with other notable SPE Delta Section Board members, such as Jan Catalano, Phil Moses, Henry Shurlds, and Matt Wandstrat to name a few of us that I noticed there. Dr. Eric Smith of Tulane was the key note speaker. He was well versed and shared many interesting and informative economic news of the world's energy market. He additionally shared some encouraging and promising news on the horizon regarding the Gulf of Mexico deepwater prospects and operations. As an outcome of the meeting during an opportunity of networking, we, Delta Section, were offered an opportunity to partner with NOGS in hosting a combined joint meeting for our members in 2016. That should be quite beneficial to us and to the NOGS members. More news to come about that opportunity.

Keep your eyes open for the upcoming annual LA Children's Museum's Christmas Tree festival which Delta Section hopes to participate and make known products that the oil and gas industry supplies to our everyday ordinary lives aside from the gasoline we pump at the stations. If you would like to be a part of this opportunity, please contact Jan Catalano for details on this annual event.

Please keep in mind that our SPE International President Nathan Meehan and our Regional Director will be visiting our Section in early 2016. That should be very exciting. We should have the details sorted out by our next newsletter publication. More to come regarding that event as well.

And, check out the newsletter articles, announcements, and advertisements in this publication. Our Senior Advisor, Mr. Allen Porter, has a few seasoned words and valued information for us that are sure to broaden our perspectives as he always does!

Once again I would like to remind you, that SPE International and SPE Delta are here to assist you in both the good times and when we face troubled times. SPE Connect is a great way to network with SPE members near and far. I'd like to encourage you to reach out to others in an effort to support and to be supported. If there are members that have been adversely affected by the current state of the industry, please let SPEI know, they are offering to waive your membership dues. You can contact SPEI at service.org@spe.org for additional information on this offer. Remember, that we too will offer a more affordable meeting registration fee for those of you who may be between employments. Also, our Young Professionals are planning to host soft skill presentations that may also be of assistance to any of our members faced with unexpected challenges and changes. Please keep a look out in our newsletters and also contact us so that we can discover additional ways that we can serve and support you.

There are and will be many opportunities that you can expand your knowledge and networking, and that will increase your membership benefit as you experience and explore, so I am hoping that each of you will take advantage of these many opportunities coming your way.

In closing, I, along with the entire Delta Section Board including the Young Professionals, would like to wish you and yours a very happy and safe holiday season and a very bright new year. And, as always we are looking forward to hearing from you so that we can better serve you.

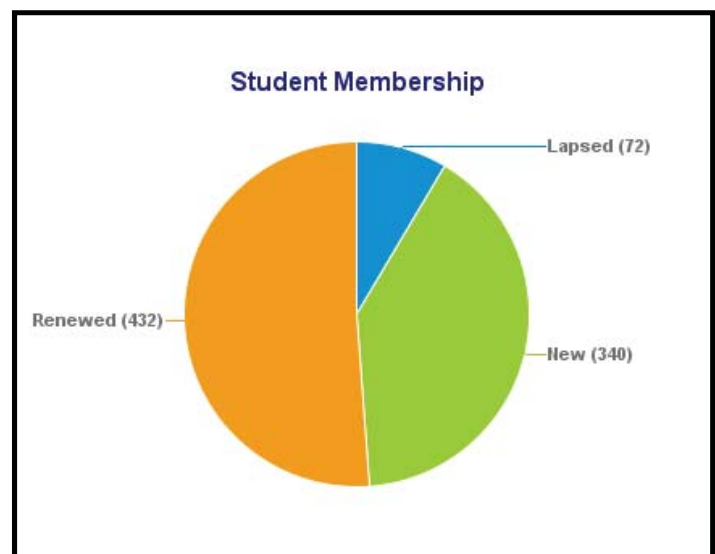
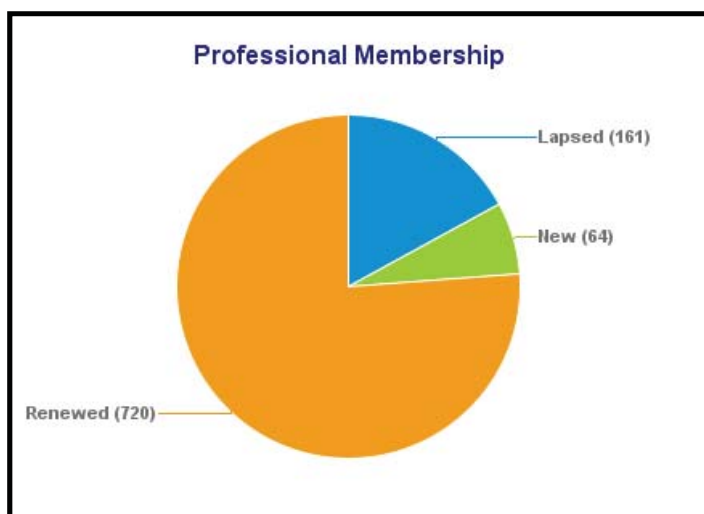
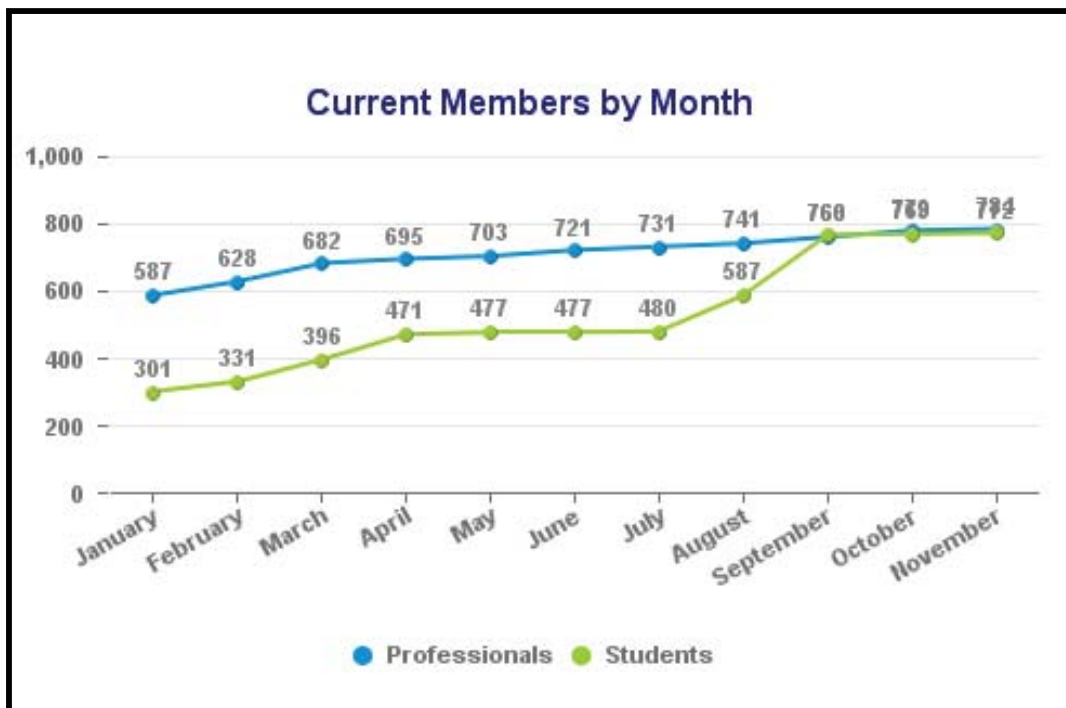
Happy New Year!
Angie D. Gobert
Your 2015-2016 SPE Delta Section Chair

SPE-Delta Membership Report

Submitted by: Daniel Durey (Membership Chairperson)

As of December 2015

Total Full Members	945
New Members	64
Unpaid Members	161
Total Student Members	844



JANUARY 2016 CONTINUING EDUCATION COURSE

Professional Ethics for Petroleum Engineers

By: John Rogers Smith, P.E., Ph.D

Thursday, January 28, 2016

2:00 – 3:30 pm

Room E101 in Chevron's Northshore office:
100 Northpark Blvd, Covington, LA 70433

Cost \$35 per person

RSVP <http://www.spe-delta.org/eventDetail.asp?keyEventID=451>
or Contact Henry Shurlds:
(985) 778-2902 ~ henry@onesourcepros.com

Overview of Presentation and Seminar

This presentation and seminar is intended to provide participants an introduction to the concept of, and guidelines for, professional ethics in the practice of petroleum engineering. This subject is of clear relevance in improving the public perception of our industry and preserving our individual personal and professional integrity. We believe the discussion will be of interest to all participants because we all encounter situations where the potential for conflicts of interest, limitations of technical competence, or compromises between professional judgment and economic or political forces arise.

The formal presentation will begin with a brief review of ethical guidelines from some of the relevant professional societies and boards. It will continue with some examples of the kinds of ethical questions that arise in actual practice of drilling, production, completion, reservoir, and environmental control engineering. We will discuss these examples and the resulting challenges that are inherent in implementing good ethics from the different perspectives of a consultant, an industry employee, and a supervisor. The ethics discussion will provide 1.5 hours of PDH and fulfill the requirement of one full hour (1-PDH) of continuing education on ethics for registered professional engineers.

Speaker Biography

John Rogers Smith retired from Louisiana State University in Baton Rouge where he was an associate professor and held a Campanile professorship. He is a registered, professional Petroleum Engineer in Louisiana. He earned a BS in Electrical Engineering from UT Austin and a MS and Ph.D. in Petroleum Engineering from LSU. He has over 20 years of industry experience in drilling, production, research, and reservoir activities. John is a life member of SPE and a long-time member of the SPE Delta Section.



Delta S

CONTINUING





Section

EDUCATION



MARCH 2016 CONTINUING EDUCATION COURSE

Mechanical Properties of Coiled Tubing

By: Julius Langlinais, Ph.D., Professor Emeritus

Louisiana State University Department of Petroleum Engineering

Wednesday, March 16, 2016

1:30 – 4:30 pm

One Shell Square Annex (*tentative*)
701 Poydras St., New Orleans, LA 70139

Cost \$100 per person

RSVP <http://www.spe-delta.org/eventDetail.asp?keyEventID=452>

or Contact Henry Shurlds:

(985) 778-2902 ~ henry@onesourcepros.com

Overview of Presentation and Seminar

Coiled Tubing (CT), particularly the larger diameter sizes, has found many uses in today's petroleum industry. An understanding of the limitations of CT is beneficial to the engineer planning various well operations involving its use. The objective of this seminar is a better understanding of the mechanical properties (tension, burst, collapse, buckling) of CT, including API RP 5C7. Of particular interest is the collapse limitations. A realistic case study will be discussed to emphasize these properties and demonstrate how poor decisions can lead to subsequent costly consequences. This seminar will benefit the non-petroleum engineer, or the petroleum engineer that has been involved in other aspects of the E&P industry.

Speaker Biography

Dr. Julius Langlinais has over 40 years of experience in the petroleum industry and retired in 2008, holding the title Professor Emeritus. He has worked as a Production Engineer for Continental Oil Company and a Drilling Engineer with Superior Oil Company, as well as 28 years on the faculty of the Craft and Hawkins Department of Petroleum Engineering at Louisiana State University (LSU). During his LSU employment, Dr. Langlinais served as the Associate Dean for the College of Engineering for 15 years. Courses taught at LSU include Well Design, Drilling, Engineering Economics, Petrophysics, and Advanced Topics in Production Engineering. Since retiring in 2008, he has consulted on various industry problems as well as teaching classes on an adjunct basis for the PETE department. Dr. Langlinais is a Registered Professional Engineer (Petroleum) in Louisiana and is a member of SPE.



Society of Petroleum Engineers

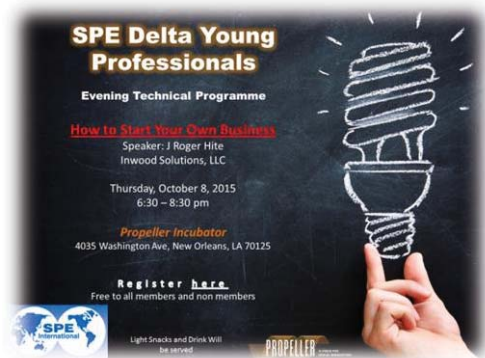
Delta Section – Young Professionals

On Thursday, October 8, the SPE Delta Young Professionals group hosted a presentation regarding “How to Start Your Own Business” presented by J. Roger Hite of Inwood Solutions, LLC. The presentation was held at Propeller, a New Orleans based start-up incubator to help enable free thinking and enthusiasm around the topic.



In the spirit of decreased industry activity in the local US region, Roger’s interactive topic with the 22 attendees covered discussions ranging from the specifics of his own start up journey within and outside of the oil and gas industry to a high level perspective into

the government and social bodies capable of supporting start-up requirements. Lending insight into corporate structure, initial investor relationships, and future growth projection, Roger’s detail was noted to inspire the group’s desire to expand on their own ideas and drives to operate their own start-ups.



As part of SPE YP’s efforts to continue to deliver opportunities for softskill improvement and continuing education sessions to its younger demographic, this and multiple other planned presentations for the 2015-2016 event year will focus on attendee networking, opportunity recognition, and engagement. For more information on planned topics or to provide insight into desired topics for presentation, contact c.hosli@shell.com.



Presentation attendees listen as J. Roger Hite Presents on local groups assisting in startup structure

Upcoming YP Programs and Events

- YP Social and Networking Event (December 2015)
- Technical Program Topic TBD (December 2015)
- Shell Robert Training and Conference Center (January 2016)

For more info on planned programs and field trips contact:

Colin Hosli (c.hosli@shell.com) or Stewart Shannon (stewart.shannon@shell.com)



Society of Petroleum Engineers

Delta Section – Young Professionals

On Thursday, September 9, the SPE Delta Young Professionals group jointly hosted an Energy Industry Happy Hour and Networking Event. The event was held at the New Orleans Museum of Art and was co-hosted with the American Petroleum Institute (API) Delta Chapter and the Women's Energy Network (WEN) of South Louisiana.



Attendees enjoyed casual conversation during the networking event while having the opportunity to engage with senior management from a number of local and international corporations in attendance.



SPE, API, and WEN Members enjoy a casual beverage and a chance network across the industry

This, in addition to the softskills presentation hosted on October 8 regarding "How to Start Your Own Business," are part of an agenda of planned presentations for the 2015-2016 event year which will focus on attendee networking and engagement. For more information on other social and networking engagements or to provide insight into desired organizations to co-host and interact with in the future, contact c.hosli@shell.com.

Upcoming YP Programs and Events

- YP Social and Networking Event (December 2015)
- Technical Program Topic TBD (December 2015)
- Shell Robert Training and Conference Center (January 2016)

For more info on planned networking and social events contact:

Colin Hosli (c.hosli@shell.com) or Stewart Shannon (stewart.shannon@shell.com)



NOVEMBER GENERAL MEETING LUNCHEON

SPE DISTINGUISHED LECTURER

DONALD PURVIS



OIL AND GAS INDUSTRY INFRASTRUCTURE IN COASTAL LOUISIANA

A proposal to assess the impacts of relative sea level rise due to subsidence using industry knowledge base, data and technology

The New Orleans Geological Society
November 2015

NOGS PROPOSAL: OIL AND GAS INDUSTRY INFRASTRUCTURE IN COASTAL LOUISIANA

Published now on our website:

[http://www.nogs.org/Content/pdf/NOGS-Faulting
%20and%20Subsidence%20in%20
Coastal%20Louisiana.pdf](http://www.nogs.org/Content/pdf/NOGS-Faulting%20and%20Subsidence%20in%20Coastal%20Louisiana.pdf)

The proposal is for the oil and gas industry to promote university research projects to assess the impacts of relative sea level rise due to subsidence on the coastal infrastructure using industry knowledge base, data and technology. The proposal has been in development for some time, and we currently have projects in various stages of development at UNO, Tulane and LSU. We are working to expand the effort and are in discussions with UT Austin, USM and LUMCON about future projects.

If you know of any areas or specific projects that would benefit from the type of evaluation envisioned by this proposal, please let us know, and we will work to get it done.



Refreshments provided
by Supreme Services.
Special thanks to our
sponsoring company.



Thursday, December 17th, 2015

6:00 PM – 8:00 PM

**Join SPE Delta Young Professionals for a
Happy Hour Social Event at Barcadia in
downtown New Orleans!**



Society of Petroleum Engineers
P.O. Box 52737
New Orleans, LA 70152

Non-Profit Org.
U.S. Postage
PAID
Permit No. 7
Mandeville, LA



Happy Holidays from SPE-Delta!

