



Delta Section

NEWSLETTER



Volume 32 No. 5

January 2016

SPE Distinguished Lecturer
Maricel Marquez

Completion Scorecard: The Importance of Scoring High

Completion performance and reliability can have a significant impact on the economic viability and profitability of a project, particularly for deepwater developments in which the cost of intervention and completion failure can be very high. Even more, suboptimal completions may expose a company to substantial environmental risks and potentially jeopardize its public image and reputation. The lecture will discuss key lessons learned and best practices identified from look-back studies conducted on frac-pack completions in several deepwater fields across the world. The assessment relies on the use of a proprietary scorecard, which grades the quality of the completion based on key aspects of the well design and installation process, including rock stresses and well orientation, debris management, perforating, fracture design and execution, fluid loss management, and mechanical issues with hardware components.

Maricel Marquez is a petroleum engineer at Chevron with more than 10 years of experience. She has worked in research and development, completions, production, reservoir engineering, and project management. She was recently elected as communications director of the Women's Network Executive Committee at Chevron. Marquez holds a PhD from the University of Oklahoma. She received the 2014 Regional Completions Optimization and Technology Award from SPE Gulf Coast North America.



General Meeting Luncheon
Tuesday
January 12, 2016
11:00 a.m.

SPE Distinguished Lecturer
Maricel Marquez
Petroleum Engineer
Chevron

REGISTRATION:

<http://www.spe-delta.org/>

There are two events as always. One for the Southshore and another one for the Northshore. Please select the one that you will be attending.

LOCATIONS:

South Shore: Le Pavillon Hotel
833 Poydras St
New Orleans, LA 70112

Members \$30 • Non-members \$35

North Shore: Chevron
100 Northpark Blvd
Covington, LA 70433

Members \$20 • Non-members \$25

Please remember: All attendants must be pre-registered to attend the North Shore meeting in the Chevron office.

For questions or comments,
please contact:

South Shore: Renny A. Ottolina G.
rgrunichev@slb.com
Programs Chairperson 2015-16

PARKING:

South Shore: there's valet parking at Le Pavillon Hotel, at a discounted rate of \$10. If their lot is full, there is plenty of parking around the Le Pavillon Hotel.

Connecting the Industry's Experts



- Geoscience
- Land, Legal, & Accounting
- IT, HR, & Technical Support
- Project Controls & Management
- Operations Engineers
- Reservoir Engineers
- Production Engineers
- Drilling Engineers
- Construction Engineers
- Health, Safety, & Environmental

Executive and Staff Level Positions

www.collarini.com

Collarini Energy Staffing Inc.

Houston
832-251-0553

Where Talent Meets Opportunity!

(985) 727-2060
www.onesourcepros.comEngineering • Geoscience • Technical Support
DIRECT HIRE | CONTRACT

Slidell, Louisiana

1-800-966-2788

www.eeusa.com

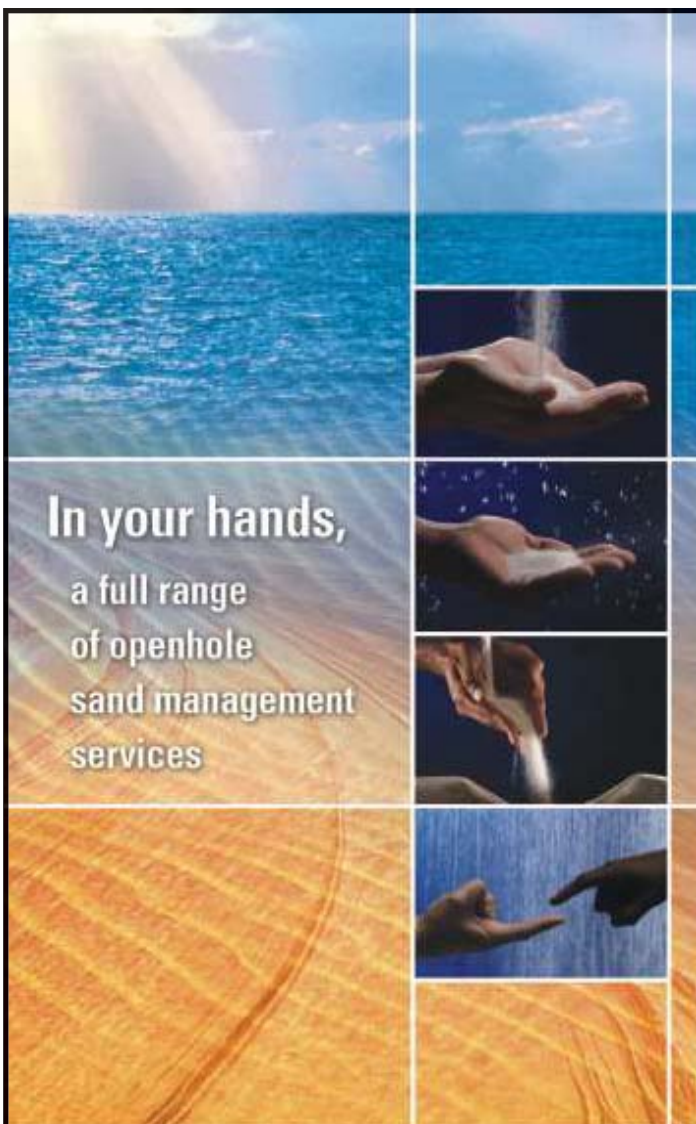
Effluent Toxicity Testing
Produced Water Toxicity
Drilling Fluids Toxicity
Sediment Toxicity Testing—SBM & SBF
275-Day Biodegradation Test

DMR/Data Management
Oil & Grease Analysis
Sample Pick & Delivery Services
Water Well & Septic Tank Testing
OECD 28-Day Biodegradation Test

Established 1987

In This Issue:

Distinguished Lecturer	1
Officers & Board of Directors	3
From the Chair	4
December Membership Report	5
Continuing Education - January 2016 Course	6
Continuing Education - March 2016 Course	7
FSU Student Chapter	8
YP Social & Networking Event Photos	9
NOGS Proposal Announcement	9
LSU Corner	10
Mergres, Regulations, Controls and Competition	11
SPE Delta Social	12

In your hands,
a full range
of openhole
sand management
services

Transcend

Reslink* screens and inflow control devices
AquaPac* integrated water-packing technologies
OptiPac* Alternate Path† gravel-pack system
IntelliPac* measurements in real time

Transcend technology.
A higher level of completion success.

www.slb.com/transcend

Schlumberger

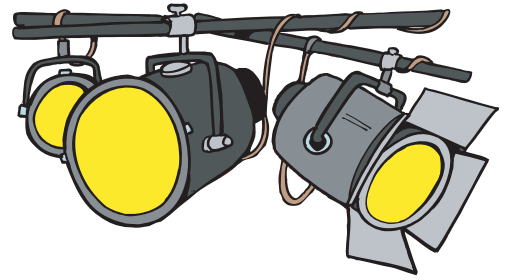
*Mark of Schlumberger © 2008 Schlumberger. 08-SMS-943
†Mark of ExxonMobil; technology licensed exclusively to Schlumberger

2015-2016 SPE Delta Section Officers and Board of Directors

Role	Name	Company	Phone	Email
Section Chairperson	Angie Gobert	BSEE	504.736.2876	Angie.Gobert@bsee.gov
Section Past-Chairperson	Tony Richards	Century Exploration	504.836.7328	Tony.Richards@centuryx.com
Program Chairperson 1st vice chair	Renny Ottolina	Schlumberger	504.425.7381	rgrunichev@slb.com
Membership Chairperson 2nd vice chair	Daniel Durey	Shell E&P	504.425.7762	Daniel.Durey@shell.com
Secretary	Jiabei Wu / Caitlyn Papso	Schlumberger/Shell	504.425.4321	JWu5@slb.com / Caitlin.Papso@shell.com
Treasurer	Victor Vaca	Chevron	985.773.6457	Victor.Vaca@chevron.com
Young Professional Chairperson	Lauren Woitha	Chevron	985.773.6679	Lauren.Fogarty@chevron.com
Young Professional Co- Chairperson	Colin Hosli	Shell	(504) 239-2302	C.Hosli@shell.com
Sec Dir/Student Chapter Liaison (LSU\NSU)	Rivers Fike	Shell	504 214 5329	Rivers.Fike@shell.com
Northshore Coordinator	Lauren Woitha	Chevron	985.773.6679	Lauren.Fogarty@chevron.com
Focus Chairperson	Sean Vaskov	Shell	504.425 3179	Sean.Vaskov@shell.com
Meeting Coordinator\Registration	Jaime Villatoro	Shell	281.380.0518	Jaime.Villatoro@shell.com
Internet Chairperson	Alvis Wilson	Shell	504.425.0953	Alvis.Wilson@shell.com
Social Chairperson	Reagan Butcher	WS Nelson	504.593.5605	Reagan.Butcher@wsnelson.com
Continuing Education Chairperson	Henry Shurlds	Onesource Prof Search	985.727.2060	henry@onesourcepros.com
Scholarship /Career Guidance	Sue Park	Chevron	985.773.7542	suepark@chevron.com
Newsletter Contents and Advertising	Vincent Liaw	Baker Hughes	985.590.6449	Vincent.Liaw@bakerhughes.com
Newsletter Contents and Advertising	Nick Judice	WMD Squared	337.735.1054	njudice@wmd2.net
HSE	Michael Waguespack	Nelson	504.593.5693	Michael.Waguespack@wsnelson.com
Section Director 2014/2016	Jenny Weekley	Shell	504.728.6449	jennifer.weekley@shell.com
Section Director 2014/2016	Jan Catalano	ORX	504.581.1806	jan@orx.com
Section Director 2014/2016	Tony Richards	Century Exploration	504.836.7328	tony.richards@centuryx.com
Section Director 2013/2015	Matt Wandstrat	LLOG Exploration	985.801.4300	mattw@llog.com
Section Director 2013/2015	Phil Moses	Consultant	504.616.6511	pamoses1@uno.edu
Section Director 2015/2017	Walter Navoy	Schlumberger	504.592.5402	navoy1@slb.com
Section Director 2013/2015	Jon Wood	LLOG Exploration	985.801.4300	jon.wood@llog.com
ONE VOICE Chairperson	Jan Catalano	ORX	504.581.1806	jan@orx.com
ONE VOICE Asst	Charlie Mayne	W&T Offshore	504.210.8172	cmayne@wt offshore.com
Deepwater Chairperson (Aug 2015)	Bob Meltz	Chevron	985.773.6843	RMeltz@chevron.com
Deepwater Treasurer	Tony Richards	Century Exploration	504 836 7328	tony.richards@centuryx.com
Deepwater Treasurer Asst	Pat Ketcham	Consultant	504.340.8100	KETCHPD@COX.NET
Sr. Advisor	Allen Porter	Jacobs Engineering	504.846.5505	allen.porter@jacobs.com
Golf Tournament Co-Chairperson	Matt Wandstrat	LLOG Exploration	985.801.4300	mattw@llog.com
Golf Tournament Co-Chairperson	Jerry Simms	LLOG Exploration	985.801.4300	jerrys@llog.com
Golf Tournament Treasurer	Jenny Weekley	Shell	504.728.6449	jennifer.weekley@shell.com
Active Past Chairs:	Jan Catalano	ORX	504.581.1806	jan@orx.com
	Matt Wandstrat	LLOG Exploration	985.801.4300	mattw@llog.com
	Tony Richards	Century Exploration	504.836.7328	tony.richards@centuryx.com
Other's Interested in Helping	Charlie Mayne	W&T Offshore	504.210.8172	cmayne@wt offshore.com
	Jiabei W	Schlumberger	504.425.4321	JWu5@slb.com



From the Chair...



Happy New Year SPE Delta!

What a very challenging 2015 year our industry has been through which has affected all of us I am sure in one way or another. And, while it is behind us, we must ponder this - that in spite of the challenges, we all have persevered and have become stronger and wiser. During most difficult times, there will be an underlying positive result, even if we may not realize it in the midst of the difficult time. It's more or less very indicative of the old cliché 'every dark cloud has a silver lining.' And, for those of us, who would like to put 2015 as far behind us as possible, we certainly have the opportunity to move forward with renewed energy that may include a re-evaluation of previous goals and perhaps revised personal mission statements that will advance and improve your career and enhance your personal life. I have no doubt that all of us have plans to improve our careers and enhance our personal life in 2016. Lakein, an author, shares the following with his readers, "Planning is bringing the future into the present so that you can do something about it now."

SPE International has developed and tweaked over the years, a mission and vision that SPE Delta Section shares and plans to carry out so that our Delta Section members can move forward in their careers and education, and make a positive contribution to on our community at large. Our Mission is to collect, disseminate, and exchange technical knowledge concerning the exploration, development and production of oil and gas resources, and related technologies for the public benefit; and to provide opportunities for professionals to enhance their technical and professional competence. Our Vision is to enable the global oil and gas E&P industry to share technical knowledge needed to meet the world's energy needs in a safe and environmentally responsible manner.

For those of us members of SPE Delta Section who have been impacted by another in our industry by sharing their technical knowledge and are known in your industry community as a subject matter pillar and inspiration, I want to mention that we have an opportunity to and I want to take a moment to encourage you to, nominate our fellow industry peers and Delta Section members to be recognized by SPE International. The deadline is February 15, 2016. Please go to the SPE Awards home page for more information at the following URL - <http://www.spe.org/awards/>

As a reminder, we will have several opportunities to engage with each other, to build relationships through networking and gain insight from Distinguished Lecturers and other subject matter experts in our industry. Please be on the lookout for various emails regarding valued meetings and training options on the horizons from our program chair, Mr. Renny Ottolina, our technical focus chair, Mr. Sean Vaskov, our continuing education chair Mr. Henry Shurlds, and our young professionals being led by Lauren Woitha and Colin Hosli. Also, take notice of our calls for assistance with

the various events such as the upcoming annual golf tournament, perhaps a Science fair or STEM function, or the 20th Gulf of Mexico's Deepwater Technical Symposium. In all of these opportunities, we all have opportunities to engage and explore and expand, which can result in being of great benefit in the long run. Our industry is here for the long haul, we of course, have our ups and downs, and we have to prepare for the unexpected but we must also seize the opportunities we are afforded as members of the SPE Delta Section.

Our 2016 President Nathan Meehan will be visiting us more than likely at the end of March/early April and he will have information that we won't want to miss hearing. Students from the SPE student chapters that we support will be in attendance and will undoubtedly bring much enthusiasm as they look forward to their careers in the energy industry. We will announce the date in our next newsletter. I am hoping that we have a great turnout. We will bridge the generations at this gathering and it more than likely will be held out at UNO Alumni's Center.

Once again I would like to remind you, that SPE International and SPE Delta are here to assist you in both the good times and when we face troubled times. SPE Connect is a great way to network with SPE members near and far. I'd like to encourage you to reach out to others in an effort to support and to be supported. If there are members that have been adversely affected by the current state of the industry, please let SPEI know, they are offering to waive your membership dues. You can contact SPEI at service.org@spe.org for additional information on this offer. Remember, that we too will offer a more affordable meeting registration fee for those of you who may be between employments. Also, I hope that many of you will take advantage of the various events and training sessions our Young Professionals are planning to host. Please take note of the various opportunities that appear in our newsletters and also contact us so that we can discover additional ways that we can serve and support you.

There are and will be many opportunities that you can expand your knowledge and networking, and that will increase your membership benefit as you experience and explore, so I am hoping that each of you will take advantage of these many opportunities coming your way.

In closing, let's make it a great year and remember, we are looking forward to hearing from you so that we can better serve you.

All the best,

Angie D. Gobert

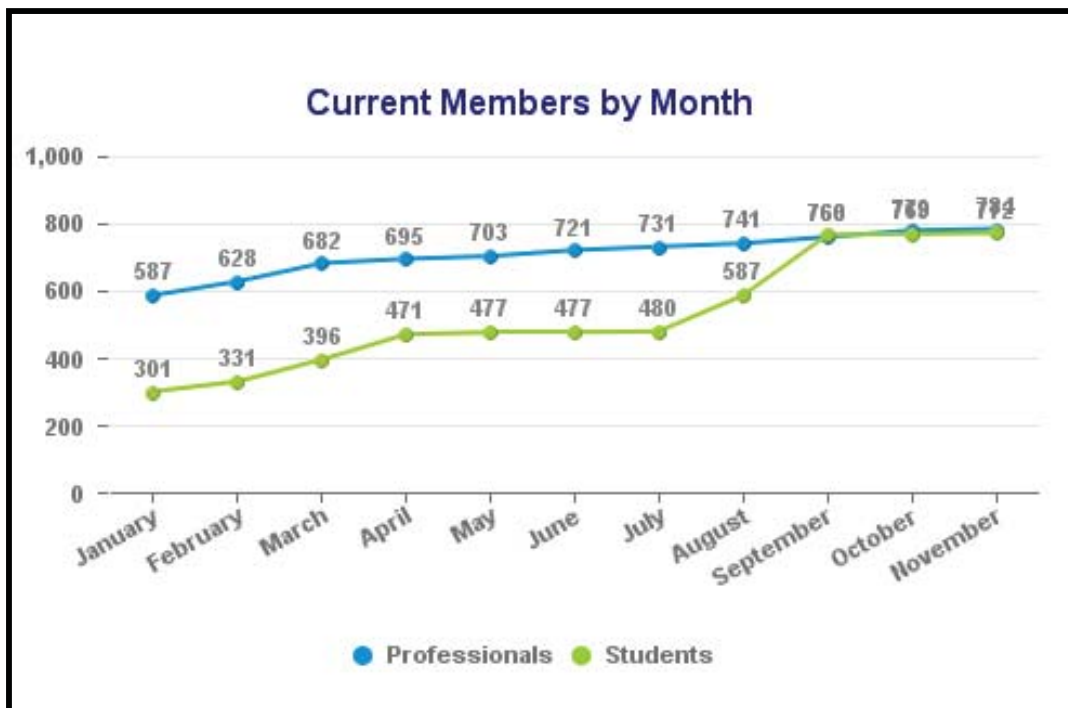
Your 2015-2016 SPE Delta Section Chair

SPE-Delta Membership Report

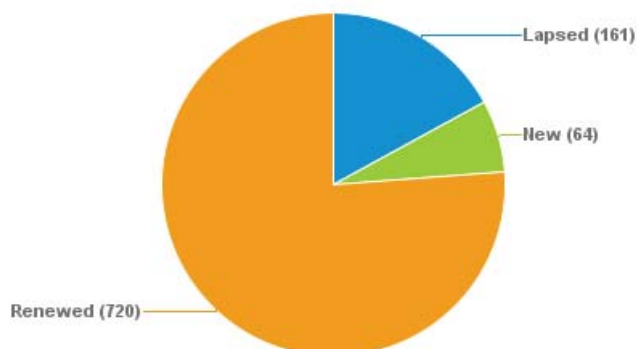
Submitted by: Daniel Durey (Membership Chairperson)

As of December 2015

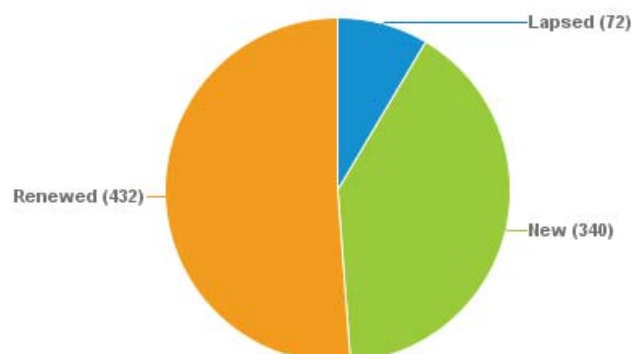
Total Full Members	945
New Members	64
Unpaid Members	161
Total Student Members	844



Professional Membership



Student Membership



JANUARY 2016 CONTINUING EDUCATION COURSE

Professional Ethics for Petroleum Engineers

By: John Rogers Smith, P.E., Ph.D

Thursday, January 28, 2016

2:00 – 3:30 pm

Room E101 in Chevron's Northshore office:
100 Northpark Blvd, Covington, LA 70433

Cost \$35 per person

RSVP <http://www.spe-delta.org/eventDetail.asp?keyEventID=451>
or Contact Henry Shurlds:
(985) 778-2902 ~ henry@onesourcepros.com

Overview of Presentation and Seminar

This presentation and seminar is intended to provide participants an introduction to the concept of, and guidelines for, professional ethics in the practice of petroleum engineering. This subject is of clear relevance in improving the public perception of our industry and preserving our individual personal and professional integrity. We believe the discussion will be of interest to all participants because we all encounter situations where the potential for conflicts of interest, limitations of technical competence, or compromises between professional judgment and economic or political forces arise.

The formal presentation will begin with a brief review of ethical guidelines from some of the relevant professional societies and boards. It will continue with some examples of the kinds of ethical questions that arise in actual practice of drilling, production, completion, reservoir, and environmental control engineering. We will discuss these examples and the resulting challenges that are inherent in implementing good ethics from the different perspectives of a consultant, an industry employee, and a supervisor. **The ethics discussion will provide 1.5 hours of PDH and fulfill the requirement of one full hour (1-PDH) of continuing education on ethics for registered professional engineers.**

Speaker Biography

John Rogers Smith retired from Louisiana State University in Baton Rouge where he was an associate professor and held a Campanile professorship. He is a registered, professional Petroleum Engineer in Louisiana. He earned a BS in Electrical Engineering from UT Austin and a MS and Ph.D. in Petroleum Engineering from LSU. He has over 20 years of industry experience in drilling, production, research, and reservoir activities. John is a life member of SPE and a long-time member of the SPE Delta Section.



Delta S

CONTINUING





Section

EDUCATION



MARCH 2016 CONTINUING EDUCATION COURSE

Mechanical Properties of Coiled Tubing

By: Julius Langlinais, Ph.D., Professor Emeritus

Louisiana State University Department of Petroleum Engineering

Wednesday, March 16, 2016

1:30 – 4:30 pm

One Shell Square Annex
701 Poydras St., New Orleans, LA 70139

Cost \$100 per person

RSVP <http://www.spe-delta.org/eventDetail.asp?keyEventID=452>

or Contact Henry Shurlds:

(985) 778-2902 ~ henry@onesourcepros.com

Overview of Presentation and Seminar

Coiled Tubing (CT), particularly the larger diameter sizes, has found many uses in today's petroleum industry. An understanding of the limitations of CT is beneficial to the engineer planning various well operations involving its use. The objective of this seminar is a better understanding of the mechanical properties (tension, burst, collapse, buckling) of CT, including API RP 5C7. Of particular interest is the collapse limitations. A realistic case study will be discussed to emphasize these properties and demonstrate how poor decisions can lead to subsequent costly consequences. This seminar will benefit the non-petroleum engineer, or the petroleum engineer that has been involved in other aspects of the E&P industry.

Speaker Biography

Dr. Julius Langlinais has over 40 years of experience in the petroleum industry and retired in 2008, holding the title Professor Emeritus. He has worked as a Production Engineer for Continental Oil Company and a Drilling Engineer with Superior Oil Company, as well as 28 years on the faculty of the Craft and Hawkins Department of Petroleum Engineering at Louisiana State University (LSU). During his LSU employment, Dr. Langlinais served as the Associate Dean for the College of Engineering for 15 years. Courses taught at LSU include Well Design, Drilling, Engineering Economics, Petrophysics, and Advanced Topics in Production Engineering. Since retiring in 2008, he has consulted on various industry problems as well as teaching classes on an adjunct basis for the PETE department. Dr. Langlinais is a Registered Professional Engineer (Petroleum) in Louisiana and is a member of SPE.

SOCIETY OF PETROLEUM ENGINEERS

Florida State University

December 2015

The Student Chapter of SPE here at FSU is enjoying our first fall semester with plenty of events and conferences. We are currently experiencing a shift in leadership to allow some of our leaders to take on new opportunities. We would like to congratulate and welcome our new Vice President, Secretary, and Public Relations Chair!

To kick the semester off, we had the pleasure of hosting Mr. Algenon Cash, the National Director of the American Energy Forum. The group discussed topics including the Keystone Pipeline and how the American petroleum Institute funds and fuels the American Energy Forum initiatives.

Over the past few months we were fortunate enough to be able to send a few members to two different conferences. In Houston, Texas, at the SPE Annual Technical Conference and Exhibition, our members got a deeper look into upstream aspects of the industry. We had the chance to enjoy technical presentations and a career fair at the Louisiana Gulf Coast Oil Exposition in Lafayette, LA.

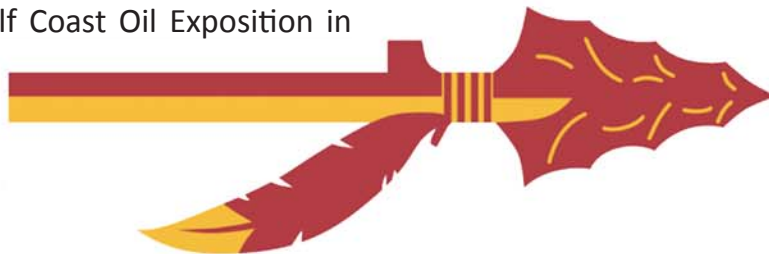
The SPE Noles love their socials and being able to spend time forming close bonds with their peers. We hosted a cookout by the pool day to bring in the new semester and soak up the sun. October's potluck fundraiser was a huge success, which will give us access to more resources when traveling and hosting speakers. Our potluck for November was Thanksgiving themed! Everyone got to enjoy a quality sit down "traditional" Thanksgiving dinner with the whole SPE family. In the spirit of the holidays, the chapter is collecting canned goods to donate to the community.

As the semester comes to a close, we are looking forward to the spring when we will be taking a refinery tour, host speakers, and lots of socials!

Go Noles!

Richard Sandoval

FSU Student Chapter President



YP SOCIAL & NETWORKING EVENT DECEMBER 2015



OIL AND GAS INDUSTRY INFRASTRUCTURE IN COASTAL LOUISIANA

A proposal to assess the impacts of relative sea level rise due to subsidence using industry knowledge base, data and technology

The New Orleans Geological Society
November 2015

NOGS PROPOSAL: OIL AND GAS INDUSTRY INFRASTRUCTURE IN COASTAL LOUISIANA

Published now on NOGS' website:

***[http://www.nogs.org/Content/pdf/NOGS-Faulting
%20and%20Subsidence%20in%20
Coastal%20Louisiana.pdf](http://www.nogs.org/Content/pdf/NOGS-Faulting%20and%20Subsidence%20in%20Coastal%20Louisiana.pdf)***

The proposal is for the oil and gas industry to promote university research projects to assess the impacts of relative sea level rise due to subsidence on the coastal infrastructure using industry knowledge base, data and technology. The proposal has been in development for some time, and we currently have projects in various stages of development at UNO, Tulane and LSU. We are working to expand the effort and are in discussions with UT Austin, USM and LUMCON about future projects.

If you know of any areas or specific projects that would benefit from the type of evaluation envisioned by this proposal, please let us know, and we will work to get it done.



LSU Students Ready to Impact Petroleum

Taylor White

Petroleum Engineering Undergraduate

Louisiana State University

This may be the most exciting year to date to be a member of SPE at Louisiana State University. The Society of Petroleum Engineers has made itself known this fall both socially and academically from supporting our fighting Tigers to representing the Tigers at regional events.

On LSU's campus, SPE has hosted industry leaders such as Chesapeake Energy, Anadarko Petroleum, Weatherford, ConocoPhillips, and Ulterra with huge turn out from our students. Rajan Chokshi, Ph.D., from Weatherford also took the time to present his knowledge, conducting an Artificial Gas Lift class for our members.

New to our chapter is the Chevron Mentor Program. Sponsored by Chevron, 22 Juniors and Seniors active in SPE have volunteered to take over 80 mentees under their wing. The mentees, consisting mostly of freshmen students, are paired with a mentor to expose them to industry guidance and academic assistance. Our goal is to expose our students to the industry as well as motivate them to start working hard as freshmen. Academic benefits are just the beginning for this program, as the mentors and mentees also manage to schedule events to have some fun and socialize. Recently we had a "lock-in" at Area 51, a local Extreme Air Sports gym, for the students to spend time together outside of the classroom; they even competed in a dodge ball tournament!

We have also managed to bring some of LSU's culture to SPE, hosting tailgates before LSU football games. Teaming up with AADE, we welcomed Sub Surface Tools to our campus for the Florida game. We enjoyed some fried alligator and cheered the Tigers to victory. We look forward to the Arkansas game on November 14th, as TETRA Technologies, Inc. is planning on roasting some Razorback for our students! Geaux Tigers!

Spotlighting our athletic talents, SPE has involved itself in intramural sports through LSU's

intramural leagues. Our co-ed flag football team and men's soccer team fought their way into the semi finals of playoffs this season. The students had a great time getting physical and were more than satisfied with our winning seasons. We have two indoor volleyball teams competing right now and have interest in more involvement during the spring semester.

With such a remarkable chapter this year, it is no surprise that our involvement breached the walls of our campus. Students participated in Petro-bowl, a trivia competition between schools, signed up for Shell Camp, an overnight camp where students conduct several experiments at Shell's training facility, and of course, our students attended ATCE.

This year's Annual Technical Conference Exhibition took place in the George R. Brown Convention Center in Houston, TX, USA. Students traveled to Houston where we had the privilege of meeting with industry professionals as well as learning more about the upstream aspects of conventional and unconventional resources. Companies from around the world were in attendance alongside our LSU students, who described the experience as the "trip of a lifetime". Next year's conference will be held in Dubai; we will have to start fundraising now!

Despite oil prices, SPE at LSU is thriving at and beyond our Baton Rouge campus. We hope to begin the spring semester with the same enthusiasm we have accrued during the fall semester. I take great pride in being a petroleum engineering student at LSU, and look forward to what is in store for us next.

GEAUX TIGERS



Mergers, Regulations, Controls and Competition

Allen Porter

Jacobs Engineering

Is the oil industry following a somewhat similar pattern set by the big American banking industry?

The government was forced to move in and “save” the huge Wall Street banks. The banks simply mismanaged their operations and overextended their capitalization. This was caused by unwise loans to things like Fannie May and Freddie Mac, government sponsored entities, creating an unstable housing market. The housing “boom” ended in disaster. Whether the government should have bailed the banks out or not is a political question. It is probably a fact if they had not taken action the American banking system would have ended in total disarray with much damage to a lot of little people.

Along with the “Bail Out” came regulation after regulation. Controls were put in place. These regulations and controls could be dealt with by the “BIG GUYS” with all their lawyers and accountants. Many small banks could not survive in these conditions. The large financial houses gobbled up the little fellows. Besides the buyouts, approximately 150 small town banks had to close in the United States through no fault of their own. They were the ones who financed the small farmer and the local business man. They knew their clients and understood their risk factor. They did not bring the industry down. They also could not support the controls and regulations. These small financial institutions are no longer in place to have some human judgment on small loans. Hard rules control everyone.

Certainly the government will not bail out an oil company. However, the industry is faced with the same type regulations and controls as the banks are. The oil companies, one after another, merged. Where is Gulf? Where is Texaco? Etc. It is admitted that “Deep Water” costs required large capital resources. However, many of the larger independents have been swallowed up by the majors. This affected many small local suppliers who had personal ties to many operators. When the majors move in they are looking to maximize profits and to be certain there is no corruption in the buying process. There is nothing immoral about that. We have seen many “blanket” buying contracts arise that in

some case eliminated long time reputable yet smaller suppliers. In some cases they were just better, more loyal suppliers who had their market shut down by the “BIG GUY.” They were the ones who would get up at night and call out people to meet some emergency. The blanket contract supplier may not have that same sense of repaying a good customer. Looking back at the disasters in the Bay Fields after hurricanes, like Camille and Betsy, the industry would have been in a worse situation with out that support from the “LITTLE GUYS” who worked days on end to restore production. Today if that happened, the day the emergency was over the small loyal supplier would get little consideration on future work unless he was low bidder.

This latest slowdown has now brought on the mergers of the large suppliers. This may be an exaggeration but is the industry now looking at only two suppliers of critical support? It is a little comical to look at all the valve names on the market and then digging further to find almost all are owned by one large corporation. To be candid it must also be realized that the mega companies have more resources for research and development than the little guy. It is certainly more difficult for American entrepreneurs to begin in the industry.

All just thoughts from an “OLD GUY” who has watched it for 60 years.



Society of Petroleum Engineers
P.O. Box 52737
New Orleans, LA 70152

Non-Profit Org.
U.S. Postage
PAID
Permit No. 7
Mandeville, LA



SPE Delta

Join SPE Delta Young Professionals for an evening presentation
by J Roger Hite of Inwood Solutions on "How to Start Your Own Business."

Light snacks and beverages will be provided.
Members and Non Members alike are welcome.

SPE DELTA SOCIAL

Hosted by SPE Delta

Thursday, January 21, 2016

6:30 – 8:30 pm



Register at spe-delta.org
Registration required

NOLA Brewery

3001 Tchoupitoulas St, New Orleans, LA 70115