



Delta Section

NEWSLETTER



Volume 32 No. 2

October 2015

General Meeting Luncheon

Tuesday
October 13, 2015

11:00 a.m. - 1:00 p.m.

Speaker

Chad Coston

*Sales & Marketing Manager
Schlumberger*

REGISTRATION:

<http://www.spe-delta.org/>

There are two events as always. One for the Southshore and another one for the Northshore. Please select the one that you will be attending.

LOCATIONS:

South Shore: Le Pavillon Hotel
833 Poydras St
New Orleans, LA 70112

Members \$30 • Non-members \$35

North Shore: Chevron
100 Northpark Blvd
Covington, LA 70433

Members \$20 • Non-members \$25

Please remember: All attendants must be pre-registered to attend the North Shore meeting in the Chevron office.

For questions or comments,
please contact:

South Shore: Renny A. Ottolina G.
rgrunichev@slb.com
Programs Chairperson 2015-16

PARKING:

South Shore: there's valet parking at Le Pavillon Hotel, at a discounted rate of \$10. If their lot is full, there is plenty of parking around the Le Pavillon Hotel.

Dear SPE community,

We are glad to announce the first General Meeting of the 2015–2016 period. The meeting will be hosted at the LePavillon Hotel in New Orleans, LA, on October 10th, from 11:00 a.m. to 1:00 p.m. Opening the Program meetings this period, we will have Mr. Chad Coston, Sales and Marketing Manager, Coil Tubing Services, a Schlumberger Company North America. Mr. Coston will present to us his outlook and impressions of the current O&G industry situation.



About the Speaker:

Chad Coston is a Petroleum Engineer from Montana Tech with over 20 years of experience in the O&G industry. He started with Precision Drilling in 1995, and moved to Schlumberger in 2000, where he started in Coiled Tubing in the GoM. He has experience in Offshore and in Land, and he has worked mainly in the United States of America and overseas.



*We hope to see you at the meeting
to enjoy a great presentation and a delicious lunch.*

Connecting the Industry's Experts



- Geoscience
- Land, Legal, & Accounting
- IT, HR, & Technical Support
- Project Controls & Management
- Operations Engineers
- Reservoir Engineers
- Production Engineers
- Drilling Engineers
- Construction Engineers
- Health, Safety, & Environmental

Executive and Staff Level Positions

www.collarini.com

Collarini Energy Staffing Inc.

Houston
832-251-0553

Where Talent Meets Opportunity!

(985) 727-2060
www.onesourcepros.comEngineering • Geoscience • Technical Support
DIRECT HIRE | CONTRACT

Slidell, Louisiana

1-800-966-2788

www.eeusa.com

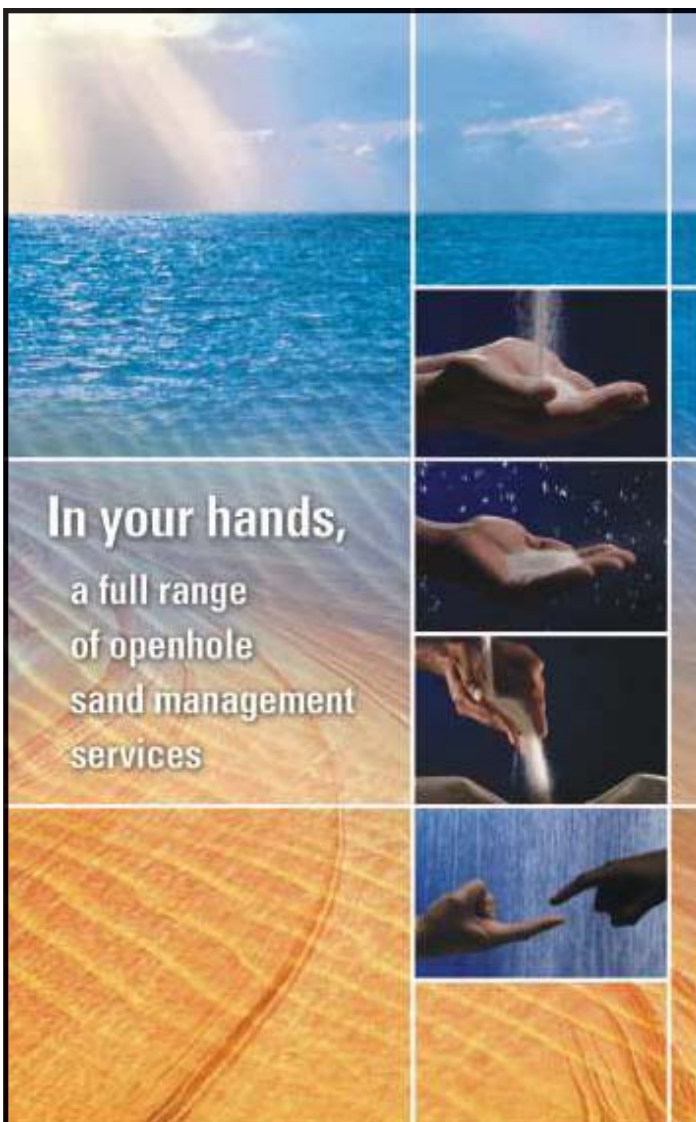
Effluent Toxicity Testing
Produced Water Toxicity
Drilling Fluids Toxicity
Sediment Toxicity Testing—SBM & SBF
275-Day Biodegradation Test

DMR/Data Management
Oil & Grease Analysis
Sample Pick & Delivery Services
Water Well & Septic Tank Testing
OECD 28-Day Biodegradation Test

Established 1987

In This Issue:

General Meeting & Luncheon.....	1
Officers & Board of Directors.....	3
From the Chair.....	4
October Membership Report.....	5
SPE-YP Evening Technical Programme.....	6
Continuing Education.....	8
Energy Industry Happy Hour & Networking Event.....	9
LCM "Party with a Purpose" Announcement.....	10
SPE Golf Tournament 2016.....	11

In your hands,
a full range
of openhole
sand management
services

Transcend

Reslink* screens and inflow control devices
AquaPac* integrated water-packing technologies
OptiPac* Alternate Path† gravel-pack system
IntelliPac* measurements in real time

Transcend technology.
A higher level of completion success.

www.slb.com/transcend

Schlumberger

*Mark of Schlumberger © 2008 Schlumberger. 08-SMS-943

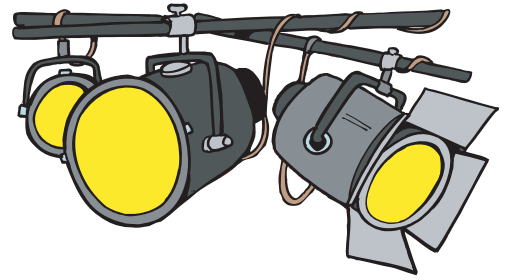
†Mark of ExxonMobil; technology licensed exclusively to Schlumberger

2015-2016 SPE Delta Section Officers and Board of Directors

Role	Name	Company	Phone	Email
Section Chairperson	Angie Gobert	BSEE	504.736.2876	Angie.Gobert@bsee.gov
Section Past-Chairperson	Tony Richards	Century Exploration	504.836.7328	Tony.Richards@centuryx.com
Program Chairperson 1st vice chair	Renny Ottolina	Schlumberger	504.425.7381	rgrunichev@slb.com
Membership Chairperson 2nd vice chair	Daniel Durey	Shell E&P	504.425.7762	Daniel.Durey@shell.com
Secretary	Jiabei Wu / Caitlyn Papso	Schlumberger/Shell	504.425.4321	JWu5@slb.com / Caitlin.Papso@shell.com
Treasurer	Victor Vaca	Chevron	985.773.6457	Victor.Vaca@chevron.com
Young Professional Chairperson	Lauren Woitha	Chevron	985.773.6679	Lauren.Fogarty@chevron.com
Young Professional Co- Chairperson	Colin Hosli	Shell	(504) 239-2302	C.Hosli@shell.com
Sec Dir/Student Chapter Liaison (LSU\NSU)	Rivers Fike	Shell	504 214 5329	Rivers.Fike@shell.com
Northshore Coordinator	Lauren Woitha	Chevron	985.773.6679	Lauren.Fogarty@chevron.com
Focus Chairperson	Sean Vaskov	Shell	504.425 3179	Sean.Vaskov@shell.com
Meeting Coordinator\Registration	Jaime Villatoro	Shell	281.380.0518	Jaime.Villatoro@shell.com
Internet Chairperson	Alvis Wilson	Shell	504.425.0953	Alvis.Wilson@shell.com
Social Chairperson	Reagan Butcher	WS Nelson	504.593.5605	Reagan.Butcher@wsnelson.com
Continuing Education Chairperson	Henry Shurlds	Onesource Prof Search	985.727.2060	henry@onesourcepros.com
Scholarship /Career Guidance	Sue Park	Chevron	985.773.7542	suepark@chevron.com
Newsletter Contents and Advertising	Vincent Liaw	Baker Hughes	985.590.6449	Vincent.Liaw@bakerhughes.com
Newsletter Contents and Advertising	Nick Judice	Jacobs Engineering	504.846.5508	nicholas.judice@jacobs.com
HSE	Michael Waguespack	Nelson	504.593.5693	Michael.Waguespack@wsnelson.com
Section Director 2014/2016	Jenny Weekley	Shell	504.728.6449	jennifer.weekley@shell.com
Section Director 2014/2016	Jan Catalano	ORX	504.581.1806	jan@orx.com
Section Director 2014/2016	Tony Richards	Century Exploration	504.836.7328	tony.richards@centuryx.com
Section Director 2013/2015	Matt Wandstrat	LLOG Exploration	985.801.4300	mattw@llog.com
Section Director 2013/2015	Phil Moses	Consultant	504.616.6511	pamoses1@uno.edu
Section Director 2015/2017	Walter Navoy	Schlumberger	504.592.5402	navoy1@slb.com
Section Director 2013/2015	Jon Wood	LLOG Exploration	985.801.4300	jon.wood@llog.com
ONE VOICE Chairperson	Jan Catalano	ORX	504.581.1806	jan@orx.com
ONE VOICE Asst	Charlie Mayne	W&T Offshore	504.210.8172	cmayne@wt offshore.com
Deepwater Chairperson (Aug 2015)	Bob Meltz	Chevron	985.773.6843	RMeltz@chevron.com
Deepwater Treasurer	Tony Richards	Century Exploration	504 836 7328	tony.richards@centuryx.com
Deepwater Treasurer Asst	Pat Ketcham	Consultant	504.340.8100	KETCHPD@COX.NET
Sr. Advisor	Allen Porter	Jacobs Engineering	504.846.5505	allen.porter@jacobs.com
Golf Tournament Co-Chairperson	Matt Wandstrat	LLOG Exploration	985.801.4300	mattw@llog.com
Golf Tournament Co-Chairperson	Jerry Simms	LLOG Exploration	985.801.4300	jerrys@llog.com
Golf Tournament Treasurer	Jenny Weekley	Shell	504.728.6449	jennifer.weekley@shell.com
Active Past Chairs:	Jan Catalano	ORX	504.581.1806	jan@orx.com
	Matt Wandstrat	LLOG Exploration	985.801.4300	mattw@llog.com
	Tony Richards	Century Exploration	504.836.7328	tony.richards@centuryx.com
Other's Interested in Helping	Charlie Mayne	W&T Offshore	504.210.8172	cmayne@wt offshore.com
	Jiabei W	Schlumberger	504.425.4321	JWu5@slb.com



From the Chair...



Howdy Fellow SPE Delta Section Members!

I have, along with one of our seasoned Section Director, Jan Catalano, and LSU's student chapter president, Ty Nielson, attended the SPE ATCE Leadership Workshop held September 27, 2015 in Houston, Texas, hence my "howdy" greeting. Additionally, Jan Catalano was recognized for her 2015 Regional Service Award at the Regional Award Recipient reception, and Ty Nielson was recognized as one of the two recipients out of 82 applicants earning an Eastern Regional scholarship awarded to exceptional undergraduate students. This was brought to my attention by our Eastern Regional Director, Bob Garland.

Furthermore, Mr. Garland and Mr. Nathan Meehan, SPEI President-elect also informed us that they will be visiting our Section and Student Chapter members during the week of December 14, 2015. This is very exciting news! Ideas and plans are most certainly sought out. If you have any ideas on how we can make the most of this visit with SPEI's 2015-2016 President-elect, please contact our Program Chair, Renny Ottolina, or myself.

At the opening address of the Leadership Workshop, our SPEI President-elect, who is cordially referred to as Nate, shared a thought-provoking and compelling quote by Mr. Ralph Waldo Emerson. I, too, will also share it with you at the start of a new Delta Section season. That quote being, "Nothing great was ever achieved without enthusiasm." And, how true is that!

Recently, we held our Board's Path Forward meeting. At this meeting, we discussed our previous year's Gold Standard award-winning annual report and how we could improve upon certain areas so that we are more fully aligned with SPE International's vision for its many Sections and Student Chapters. In my estimation, all board members present were enthusiastic and are committed to making improvements, offering quality technical and community outreach programs, and extending better service to all of you. The Young Professionals board also met recently and they too share the same commitment.

I would like to inform some of you, as well as remind you, that SPE International and SPE Delta are here to assist you in both the good times and when we face troubled times. SPE Connect is a great way to network with SPE members near and far. I'd like to encourage you to reach out to others in an effort to support and to be supported. One of the messages that SPEI promoted during the Leadership Workshop is that we are to share compassion and realize that we are all a part of this exceptional professional society. If there are members that have been adversely affected by the current state of the industry, please let SPEI know; they are offering to waive your membership dues. You can contact SPEI at service.org@spe.org for additional information on this offer. We too will offer a more affordable meeting registration fee for those of you who may be between employments. Also, our Young Professionals are planning to host soft skill presentations that may also be of assistance to any of our members faced with unexpected challenges and changes. Please keep a look out in our newsletters and also contact us so that we can discover additional ways that we can serve and support you.

I would like to invite you to hear from one of the SPE International lecturers, Mr. Roger Hite, on "How to Start Your Own Business." This will be held at the Propeller Incubator on October 8, 2015. Additional details are included in this month's newsletter.

Also, I would like to remind you that we are supporting the PIPE sponsored "Party with a Purpose." This will be a fund raising effort for the Louisiana Children's Museum. It will take place on October 20, 2015, from 7 PM to 10 PM. I hope to see you there, and I look forward to meeting you. Another outreach opportunity around the corner is the 5th Annual Strike for STEM which will be held October 24, 2015. More information on both of these events is in the newsletter.

There are and will be many opportunities that you can expand your knowledge and networking and that will increase your membership benefit as you experience and explore, so I am hoping that each of you will take advantage of these many opportunities coming your way.

In closing, I, along with the entire Delta Section Board including the Young Professionals, look forward to hearing from you so that we can better serve you. And lastly, I'd like to share with you as a reminder, our SPE International Mission and Vision: Our Mission is to collect, disseminate, and exchange technical knowledge concerning the exploration, development and production of oil and gas resources, and related technologies for the public benefit; and to provide opportunities for professionals to enhance their technical and professional competence. And our Vision is to enable the global oil and gas E&P industry to share technical knowledge needed to meet the world's energy needs in a safe and environmentally responsible manner. Once again, I wish you and yours a happy and safe Fall season!

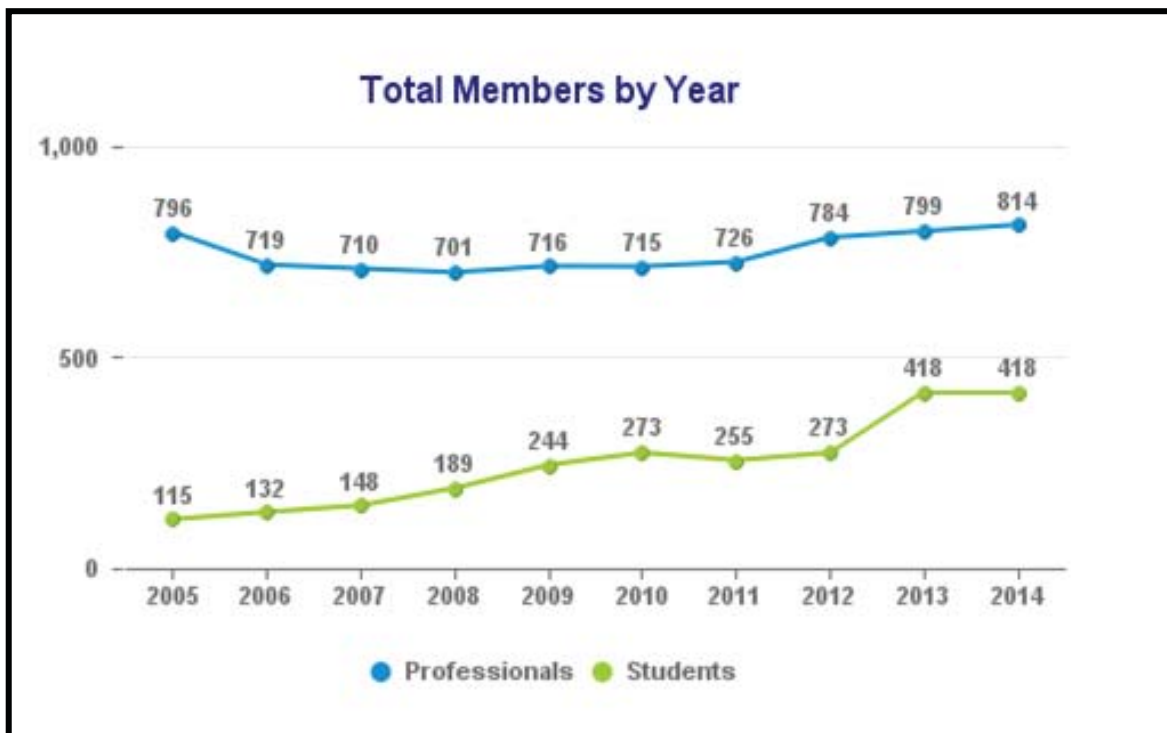
Sincerely,
Angie D. Gobert
Your 2015-2016 SPE Delta Section Chair

SPE-Delta Membership Report

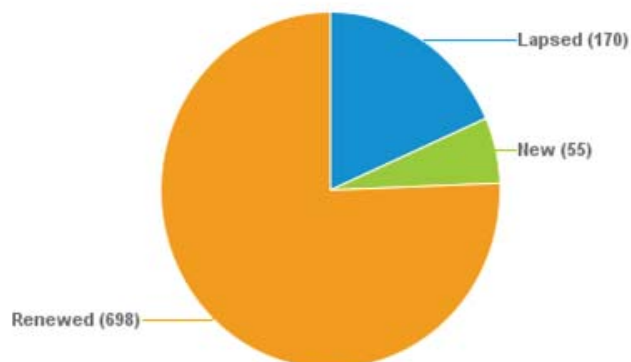
Submitted by: Daniel Durey (Membership Chairperson)

As of October 2015

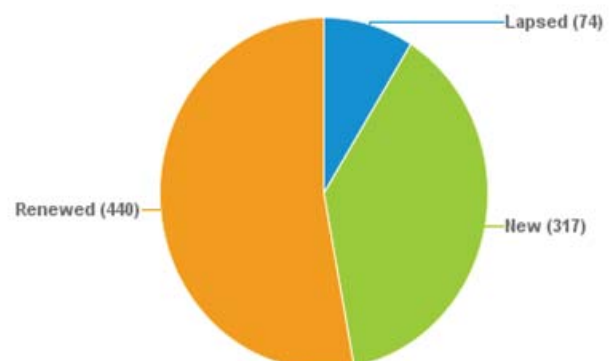
Total Full Members	923
New Members	55
Unpaid Members	170
Total Student Members	831



Professional Membership



Student Membership



SPE Delta Young Professionals

Evening Technical Programme

How to Start Your Own Business

Speaker: J Roger Hite
Inwood Solutions, LLC

Thursday, October 8, 2015
6:30 – 8:30 pm

Propeller Incubator

4035 Washington Ave, New Orleans, LA 70125

Register at www.spe-delta.org

Free to all members and non members

Light Snacks and Drink Will
be served





Society of Petroleum Engineers

SPE Delta YP is proud to host an evening event at the Propeller Incubator in New Orleans. The event will focus on J Roger Hite's Presentation regarding "Starting Your Own Business."

As more and more entrepreneurs pursue passions to venture out on their own, it becomes increasingly more important to develop a plan and build upon it to provide for the best chances of success.

Mr. Hite will help bring insight into this pursuit with over 40 years' experience in petroleum engineering in a wide variety of areas - reservoir engineering, enhanced oil recovery, information technology, and profitability analysis, working with every discipline in the petroleum industry, from geophysics to civil engineering, both onshore and offshore. Past roles have included engineering, project management, engineering management, research director and consultant.



CONTINUING EDUCATION

We successfully planned and executed three (3) continuing education events in the 2014-15 campaign, and deep appreciation is extended to everyone who helped plan, host, teach, and attend the workshops with favorable feedback from participants.

Plans are now underway to offer at least three (3) continuing education opportunities in the 2015-16 campaign. We have learned over the years that participation is higher when the seminars are conducted in the second half of the Section's program year (January – May), and that is our intention for 2015-16.

It is a privilege to again work closely with Dr. John R. Smith, retired Associate Professor of Petroleum Engineering at LSU and industry experts to plan, schedule, and execute a select number of short courses. Workshops typically follow a two (2) or four (4) hour format and course selections are made with membership input and interesting industry topics.

Any continuing education short course offered by Delta Section must have a minimum number of attendees to secure breakeven economics required to host and execute the workshop. All attendees are eligible to earn Professional Development hours and I hope that you will participate in at least one class. Course offerings are likely to be selected from the following options:

- **Professional Ethics for Engineers**
- **Mechanical Tubing Forces: Temperature, Ballooning, Piston, Buckling**
- **TBD - Partnership with BSEE, Industry, and Academia**
- **Economics & Risk Analysis**
- **Coiled Tubing Operations and Case Study**
- **Well Control**

Members who attend monthly Section membership meetings and seek to earn Professional Development hours can obtain a Certificate of Attendance at the registration table, or by contacting me to verify one (1) hour of Professional Development for participation in a technical program.

If anyone has a suggestion for a Continuing Education short course or any question related to the Section's Continuing Education program please don't hesitate to contact me.

Respectfully,

Henry Shurlds

Continuing Education Chairperson 2015-16

henry@onesourcepros.com

985-778-2902 - office



Delta Section



ENERGY INDUSTRY HAPPY HOUR & NETWORKING EVENT

September 17, 2015





In cooperation with



brings you a

PARTY WITH A PURPOSE

FEATURING



BENCHWARMERS

TUESDAY, OCTOBER 20TH FROM 7-10 PM
LOUISIANA CHILDREN'S MUSEUM

Join the Energy Professionals in Southeast Louisiana and the
International Geophysical Community for an evening of fun and advocacy.

FOOD AND BAR BY



RAFFLES

BEER TASING BY



Sign up for the event or sponsorship at www.sgs-neworleans.com
100% of all Proceeds Dedicated to the Louisiana Children's Museum

Title Sponsor - \$1000 - Leading Name on All Flyers and Posters, Recognition at Event,
and Opportunity to Address the Audience (10 Tickets to the Event)

Gold Sponsor - \$500 - Name on All Flyers and Posters, Recognition at Event (5 Tickets to the Event)

Silver Sponsor - \$250 - Recognition at Event (2 Tickets to the Event)

Individual Tickets - \$50 in advance, \$65 at the Door



**Tickets in
advance sale!**

PIPE (Petroleum Industry Promoting Education) is a collaborative effort among the petroleum industry societies,
corporations and the education community to support efforts that advance educational efforts in Southern Louisiana

For more information, please contact Eric Zimmerman at ericz@llog.com or Julius Doruelo at julius_doruelo@yahoo.com



Delta Section

GOLF TOURNAMENT

Carter Plantation

MARCH 2016



Recruiting Volunteers Now!

Please contact

MATT WANDSTRAT

at mattw@llog.com

Society of Petroleum Engineers
P.O. Box 52737
New Orleans, LA 70152

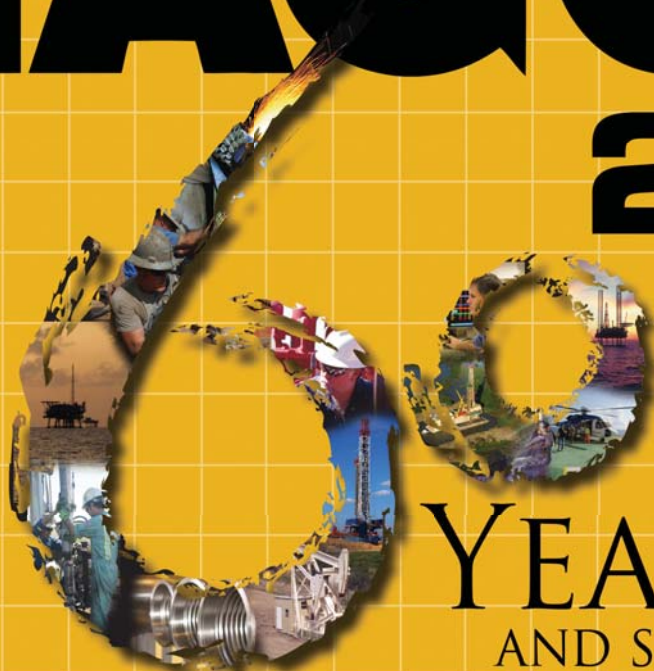
Non-Profit Org.
U.S. Postage
PAID
Permit No. 7
Mandeville, LA



LAGCOE

2015

lagcoe.com



YEARS

AND STILL CLIMBING

OCTOBER 27-29, 2015 | LAFAYETTE, LA